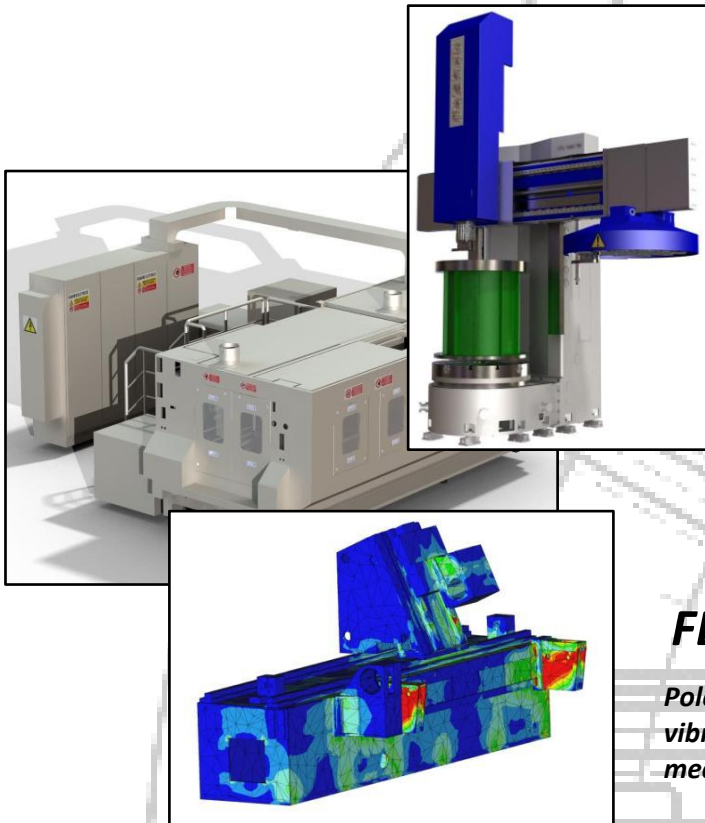


# Poletti S.r.l.

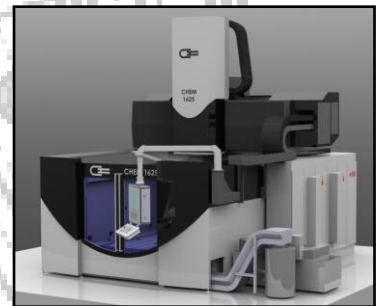
## COMPANY PRESENTATION

*"Poletti S.r.l." is an Italian company, it was founded in 1985 in Imola next to Bologna, it's more than 30 years that it works in the field of designing and building machine tools, rotating and turning tables, tool magazines, automatic machines, equipment and accessories for machine tools and prototypes, in addition we propose a wide range of customizable products in the field of tool magazines both Rack and wheel. During this time we reached a deep knowledge of designing milling/boring machines, portal machines, big and small vertical and horizontal lathes, grinding machines. Our expertise let us deal with designing modern machines with most advanced components like linear motors, hydrostatic guidance systems, high speed bearings, torque motors. Our designing team uses most modern design tools like 2D and 3D CAD and FEM software.*



### DESIGNING

*Design and building of:  
Machine tools for steel,  
marble, glass and wood  
(lathes, grinding machines,  
milling/boring machines,  
portals) automatic machines,  
(packing, packaging,  
handling and storage)  
equipment and accessories  
for machine tools.*



### FEM ANALYSIS AND CALCULATIONS

*Poletti S.r.l. can make FEM structural, thermal, fatigue and vibrational analysis, gear dimensioning and a wide range of mechanical components validation.*

### PRODUCTS AND PROTOTYPES

*Poletti S.r.l. can build and assembly automatic machines and accessories for Machine tools. Our expertise goes from wheel magazines to Rack magazines, pick Up horizontal and vertical, milling heads, angular milling heads, boring heads, grinding spindles, rotating and linear tables and custom equipment for specific needs of our customer.*



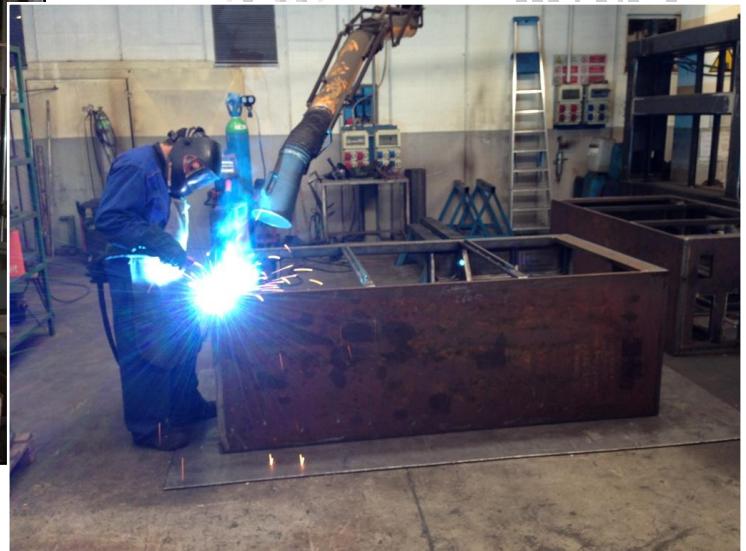
## COMPLETE SERVICE FROM DESIGN TO FINAL PRODUCT

*Taking advantage from our expertise and with the collaboration of selected partners we can offer to our customer a complete service from designing and dimensioning to fully functional prototype.*

*With our organization we can ensure to our customers very short time for prototype production.*

*We can reach those targets thanks to our selected partners that have great experience in:*

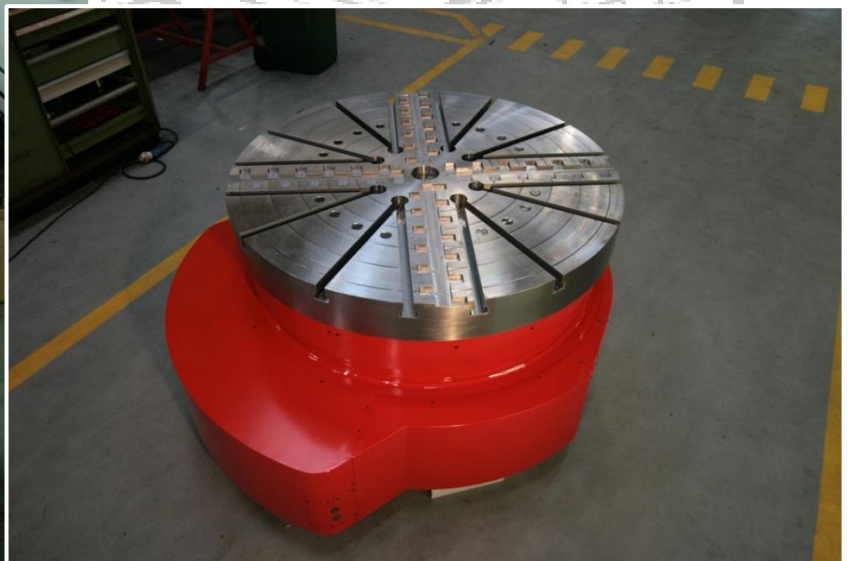
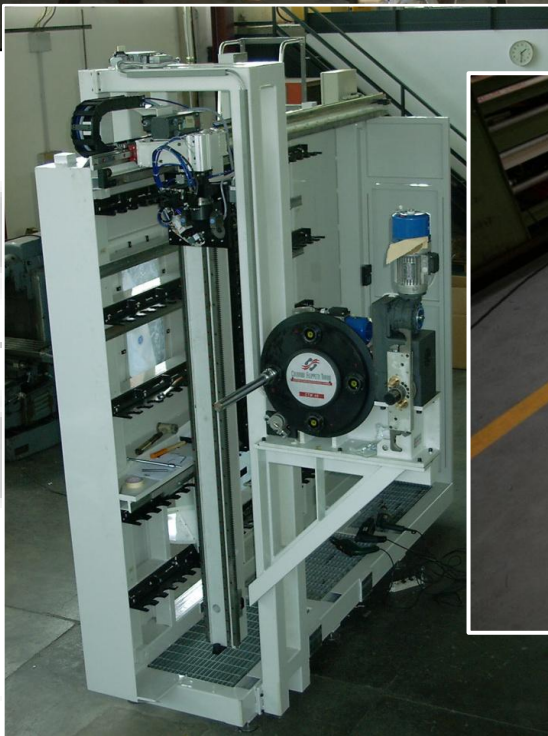
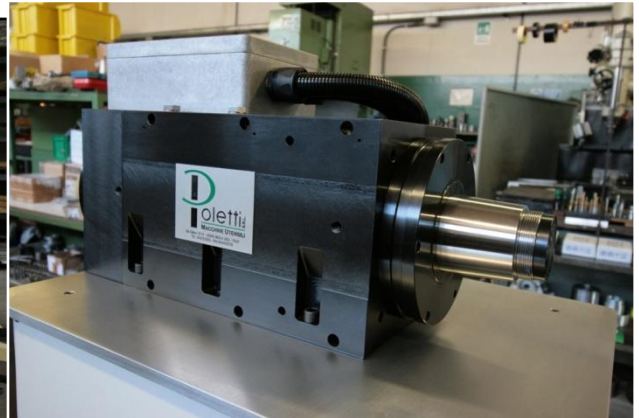
- welding of small, medium and big steel structures;
- welding of aluminum structures
- machining of medium/big steel structures;
- assembling of machines/accessories;
- building and assembling of high precision mechanical groups (spindles for grinding, milling machines);
- electrical cabling;
- pneumatic/hydraulic cabling;
- sheet metal enclosures;







## SOME EXEMPLE OF OUR PRODUCTION



If you need more information you can call us at: +390542-32203  
or contact us at [info@studio-poletti.it](mailto:info@studio-poletti.it)

## CUSTOMERS

**LATHES:** MORANDO S.p.A.; GRAZIANO S.p.A.; UTITA S.p.A.; BOST S.A.;

**GRINDING:** SAIMP S.p.A.; GIUSTINA S.p.A.; DE.CI.MA - MORARA. S.p.A.; A.T.R. ITALIA S.r.l.; OCRIM S.p.A.

**MILLING/BORING:** PAMA S.p.A.; INNSE-BERARDI S.p.A.; COLGAR S.p.A.; TECNODELTA S.p.A.; CAORLE S.p.A.; SORALUCE; LAZZATI, Breton S.p.A., Jobs S.p.A.;

**MARBLE/WOOD:** Breton S.p.a.; Intermac S.p.a. (BIESSE Group); Morbidelli SCM Group Autec Division S.p.a.; Essetre S.p.A.

**MACHINE TOOLS COMPONENTS:** Businaro S.n.c.; Iemca Division of Igmi S.p.a.; Norblast S.r.l.

**PACKAGING and OTHER:** Minipan S.r.l.; Carpigiani Group-Ali S.p.a.; Casmatic S.p.a.; Cat System S.p.a.; Cefla S.c.r.l.; Faac S.p.a.; Gfp S.n.c.; Robopac Sistemi S.r.l.; Sica S.p.a.; Technogym S.r.l.; Comecer S.p.a.; Curti S.p.A.; Prb S.r.l.; I.m.a. S.p.a.; Komatsu S.p.A. ; Tecnomatic S.r.l. ;

## CAD SYSTEM



creo parametric



SOLID EDGE



AUTODESK  
INVENTOR®

creo elements/pro™

Poletti srl uses a modern informatics system with most advanced 3D and 2D software, hardware systems and FEM Analysis programs to satisfy most innovative needs of designing market



## FEM AND DIMENSIONING

creo simulate



SOLIDWORKS  
SIMULATION



## CERTIFICATIONS

- UNI EN ISO 9001:2008 for third part machine and equipments designing
- Research laboratory Certified by M.U.R.S.T.



REG. N. 2574  
UNI EN ISO 9001:2008



Selice Street, 72/74  
40026 Imola (BO) – Italy  
Phone. +39 0542 32203  
Fax +39 0542 32270  
[www.studio-poletti.it](http://www.studio-poletti.it)  
[info@studio-poletti.it](mailto:info@studio-poletti.it)